



Dinner Program

ACKNOWLEDGEMENT OF COUNTRY

WELCOME & INTRODUCTION

Adam Leto | CEO, Western Sydney Leadership Dialogue

AWARDS: Project of the Year Category Winners – Part 1

ENTERTAINMENT

Shohrat Tursun Trio

AWARDS: Project of the Year Category Winners – Part 2

FIRESIDE CHAT

Josh Murray | Secretary, Transport for NSW
Interviewed by: **Christopher Brown AM** | Chairman,
Western Sydney Leadership Dialogue

A deep dive with the man overseeing the largest capital budget in our state's history. With some critical service delivery challenges, project cost pressures and transport, particularly metro, also playing a key role in tackling the housing supply challenge, we will unpack the NSW Government's priorities for GWS transport.

AWARD: Project of the Year Award and the Chairman's Prize

CLOSING REMARKS

2023 Project of the Year Nominees



Outstanding Industrial Project

Altitude Premier Logistics Estate at Bankstown Airport

Aeria Management Group's Altitude estate features over 164,000 square metres of world-class logistics, warehousing and office accommodation across 46 hectares.

Designed by SBA Architect, the 24/7 global logistics hub is a key part of the 300-hectare Aeria precinct, which also includes Bankstown Airport, supporting more than 6500 jobs and contributing over \$1 billion to the NSW economy each year.



Outstanding Innovation Project

Australian Motorsport Innovation Precinct

Delivered by Evolve Projects, AMIP will drive a unique, industry recognised High-Performance Technology and Motorsport cluster for Sydney and Australia, and strategically aligns with the Greater Sydney Parkland's Eastern Creek Motor Sports Precinct Final Masterplan.

This special precinct is keeping the best and brightest talent in Western Sydney who can work and live in the region and enjoy their passion for motorsport.



Outstanding Transport Infrastructure Project

Bidgee Bidgee Bridge, Parramatta Light Rail Works

Bidgee Bidgee Bridge is the largest new bridge delivered on Stage 1 of the Parramatta Light Rail project in Rosehill, and spans across James Ruse Drive. Bidgee Bidgee Bridge has become the state's second longest steel arch bridge span, weighing 1425 tonnes, and measuring 64 metres long and 16 metres high. The bronze-coloured steel arch structure was installed during meticulous overnight engineering, which involved the use of four self-propelled modular transporters.



Outstanding Sustainability Project

Bungarribee Community Battery

Western Sydney has switched on its first community battery in Blacktown. Endeavour Energy's goal is to decarbonise the grid by 2035 and create a two-way energy network that delivers resilient, efficient and reliable electricity for everyone living in the West. Now fully subscribed, the Bungarribee community battery works by enabling local residents to generate, store and share solar power without having to buy a battery.



Outstanding Social and Affordable Housing Project

Lidcombe Rise

The Lidcombe Rise project is an innovative collaboration between community housing provider Evolve Housing, Housing Australia, NSW Land and Housing Corporation and developer Billbergia Group, who all strive to ease housing pressures across Australia. The successful development of Lidcombe Rise will see a total of 376 new homes with 63 social housing units, 93 affordable housing units and 220 private dwellings across four buildings in a growing neighbourhood.



Outstanding Community Project

Liverpool Civic Place

New public spaces and community facilities will be delivered for the rapidly growing South Western Sydney region. The 13,400sqm, A-Grade 6-Star Green Star designed commercial space includes the new Liverpool City Council, Council Chambers and offices, commercial tenancies and a new cutting-edge library and art gallery. It is also an all-electric building with potential carbon neutral operation of library and office buildings.



Outstanding Sport & Recreational Project

Parramatta Aquatic Centre

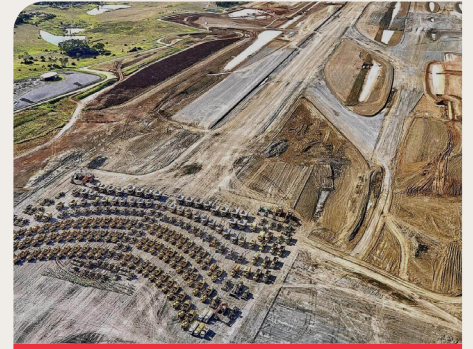
Designed by Andrew Burges Architects, McGregor Coxall and Grimshaw, the new Parramatta Aquatic Centre replaces the demolished Parramatta Memorial Pool and provides a recreational, civic and community hub for the City focussed around and celebrating the pleasures of swimming in a parkland setting. Thanks to a major joint investment from the NSW Restart Fund and City of Parramatta Council, the project provides learn-to-swim and children's play areas, indoor and outdoor pools, large-scale wellness and recreation centre and multi-purpose community and function rooms.



Outstanding Tourism & Hospitality Project

Pullman Sydney Penrith

Pullman Sydney Penrith is the suburb's first 5-star hotel, combining business, entertainment and leisure in a world-class destination. Accompanying the Panthers Leisure and Entertainment Precinct, the hotel presents 153 sophisticated guest rooms and suites, along with some of the region's best dining, bars, an elite fitness centre and sauna, as well as the fully equipped 1,250sqm premium Western Sydney Conference and Exhibition Centre.



Outstanding Civil Infrastructure Project

Western Sydney International Airport Earthworks

Imagine shifting almost 27 million cubic metres of earth to build a brand-new airport to take Western Sydney to the world. Delivered by an Acciona CPB joint venture, one of Australia's largest earth moving projects began in September 2018 and took five years and up to 311 earth moving machines to complete. In an incredible win for circularity and sustainability, nearly six million tonnes of high-quality sandstone was then brought in from tunnelling projects across Sydney to lay the foundations for Sydney's new international gateway.



Outstanding Education Project

Western Sydney University Bankstown City Campus

Western Sydney University's Bankstown City Campus is a transformative and pivotal cornerstone propelling the progression of Bankstown CBD and Greater Western Sydney. The impressive 18-storey tower comprises of nine levels for education and nine levels for industry. It exemplifies innovative and sustainable development, combining world-class architecture, design and the highest achievable sustainability credentials. The campus will contribute to a range of long-term social and economic benefits for the region.



Outstanding Health Project

Westmead Hospital Mother & Baby Unit

Westmead Hospital Mother & Baby Unit was part of the \$700 million State-Wide Mental Health Infrastructure Program. The NSW Government capital works program delivers co-designed facilities for women with severe or complex mental health needs during the perinatal period, have significant clinical risk and are in the acute stages of their illness. The project provides comprehensive specialist inpatient treatment and care from Western Sydney Local Health District and across NSW.



Chairman's Prize

Merrylands Civic Square

Merrylands Civic Square provides the community with an array of benefits and accessibility values. It draws heavily from nature, with themes of water and ecology. Moreover, it offers opportunities to appreciate nature and open space in the busy centre. To combat the urban heat island effect, Cumberland City Council and the NSW Government have incorporated built-in mitigation measures in the square.

Event Partners

Supported by

